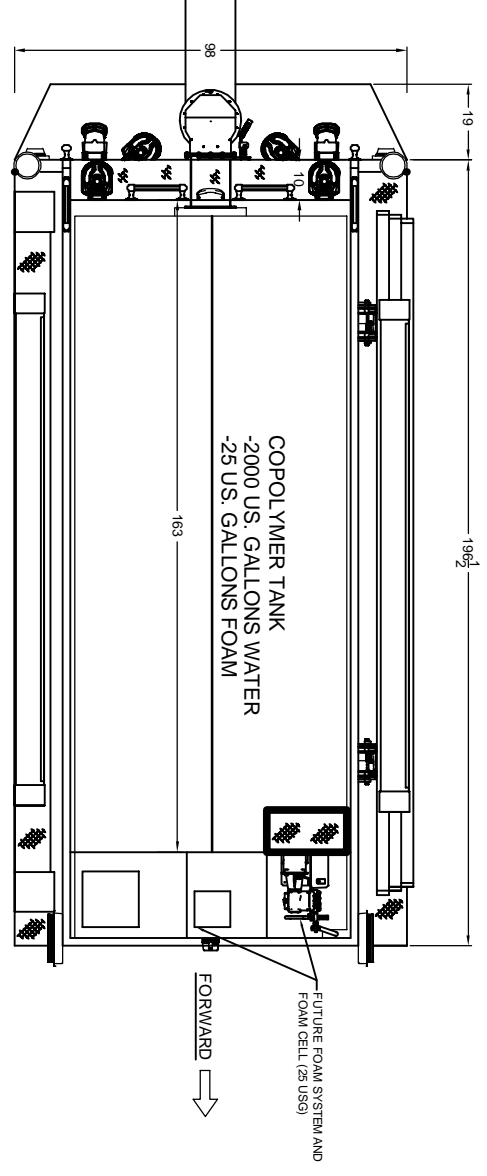


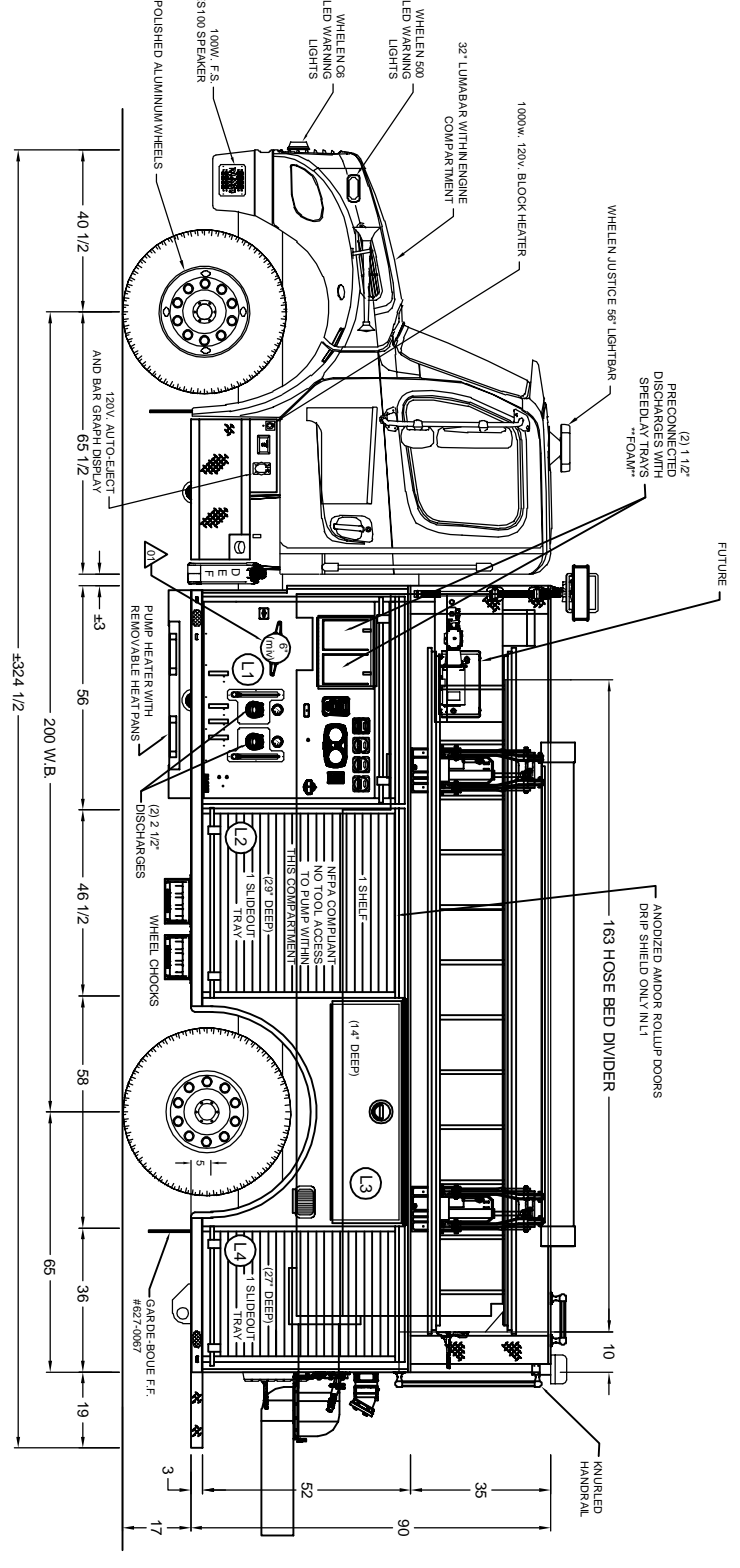
**CURB SIDE VIEW**

**NOTES:**  
 \*\* LUMBAR LIGHTING\*\* IN EACH COMPARTMENT (MAGNETIC SWITCH)  
 \*\* COMPARTMENTS INTERIOR : GREY ZOLATONE 20-64\*\*  
 \*\* PUMP PANEL CONTROL : BLACK ZOLATONE\*\*

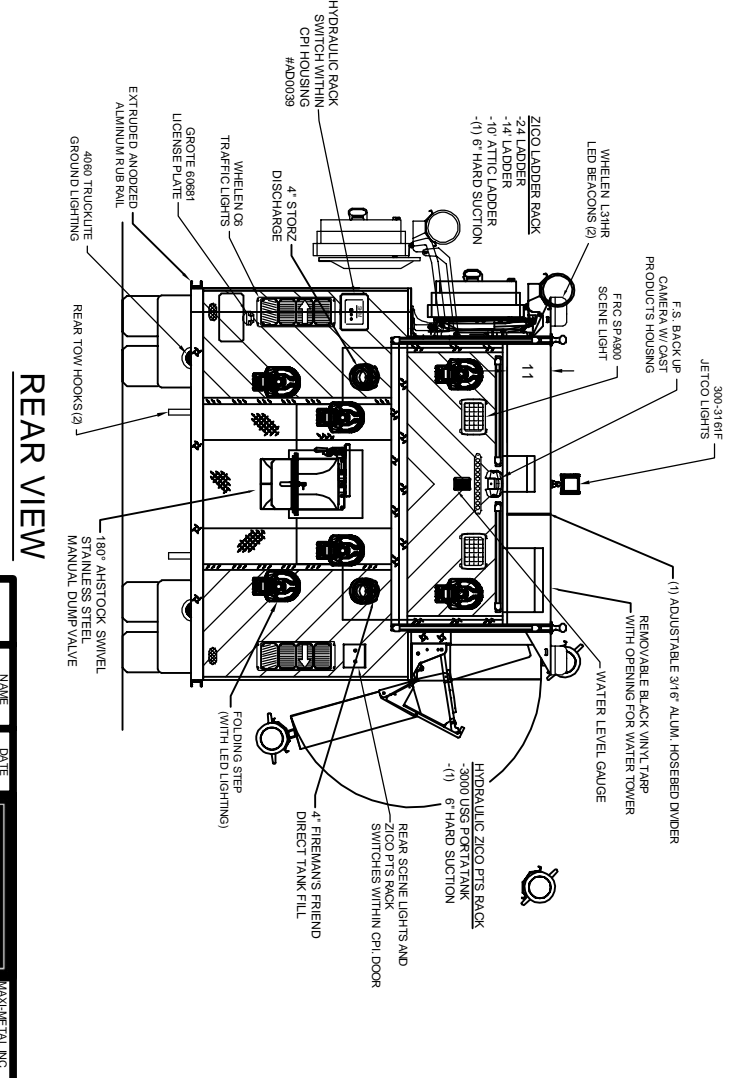
**DARLEY PSP 1250 GPM PTO PUMP**  
 (FOAM SYSTEM READY)



**TOP VIEW (BODY)**



**STREET SIDE VIEW**



**REAR VIEW**

EN CAS DE DISPARITE ENTRE CE DESSIN ET LE DEVIS TECHNIQUE, LE DEVIS TECHNIQUE PREVAUDRA.  
 IN CASE OF DISCREPANCY BETWEEN THIS DRAWING AND THE TECHNICAL SPECIFICATIONS, THE TECHNICAL SPECIFICATIONS SHALL PREVAIL.

ZONE	REV	DESCRIPTION	DATE	APPROVED
A6	01	REPLACE 6th ENTRY BY 6th HW, REMOVE 2-1/2 PONY	2020/09/22	FREDERIG

<b>MAXIMETAL</b>	3245, 28e AVENUE 56A 1E1 SAU 1E1	PHONE NO. : 418 228-6887 FAX NO. : 418 228-6883
<b>MAXIMETAL</b>	3245, 28e AVENUE 56A 1E1 SAU 1E1	PHONE NO. : 418 228-6887 FAX NO. : 418 228-6883
<b>MAXIMETAL</b>	3245, 28e AVENUE 56A 1E1 SAU 1E1	PHONE NO. : 418 228-6887 FAX NO. : 418 228-6883
<b>MAXIMETAL</b>	3245, 28e AVENUE 56A 1E1 SAU 1E1	PHONE NO. : 418 228-6887 FAX NO. : 418 228-6883

<b>MAXIMETAL</b>	3245, 28e AVENUE 56A 1E1 SAU 1E1	PHONE NO. : 418 228-6887 FAX NO. : 418 228-6883
<b>MAXIMETAL</b>	3245, 28e AVENUE 56A 1E1 SAU 1E1	PHONE NO. : 418 228-6887 FAX NO. : 418 228-6883
<b>MAXIMETAL</b>	3245, 28e AVENUE 56A 1E1 SAU 1E1	PHONE NO. : 418 228-6887 FAX NO. : 418 228-6883